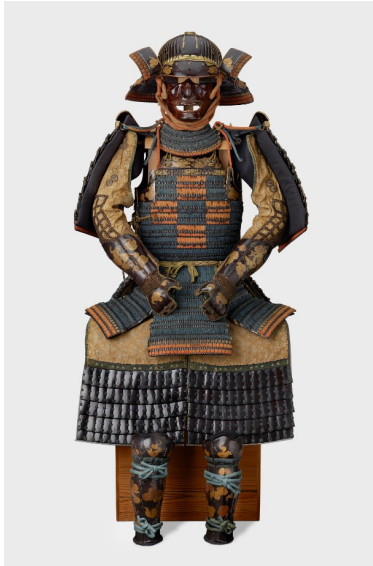


Japan: Courts and Culture

The Queen's Gallery, Buckingham Palace

12 June—8 November 2020



Iwai Yozaemon, Armour, c.1610.
Sent to James I by Shōgun Tokugawa Hidetada in 1613.



Arita, Hizen Province,
Two hexagonal jars and covers, 1670–90.
Probably part of Mary II's collection at
Hampton Court Palace.



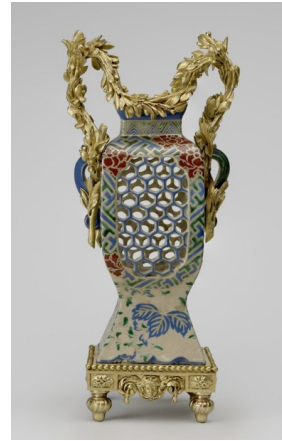
Japan (cabinet), France (stand),
Cabinet on stand, c.1640–90 (cabinet), c.1704/5 (stand).
Possibly acquired by Queen Caroline,
consort of George II.



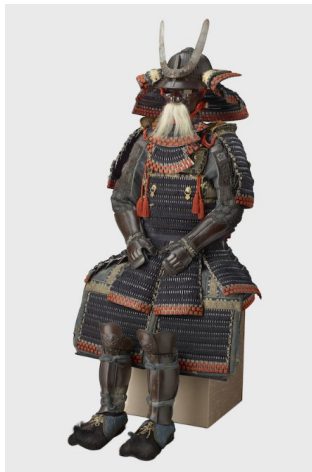
Arita, Hizen Province (porcelain), France (mounts),
Jar and cover, 1690–1720 (porcelain),
1780–1820 (mounts).
Purchased for George IV in 1820.



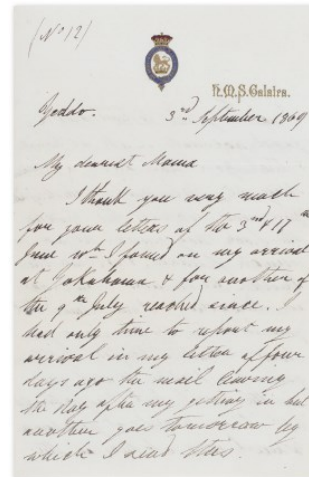
Arita, Hizen Province (porcelain), France (mounts),
 Pair of pastille burners in the form of tortoises,
 1680–1700 (porcelain), 1700–50 (mounts).
 Acquired by George IV.



Kyoto (porcelain), France (mounts),
 Mounted vessel, 1700–75 (stoneware),
 1750–75 (mounts).
 Probably acquired by George IV.



Myōchin school of armourers,
 Armour, 1537–1850,
 Presented to Prince Alfred, Duke of Edinburgh by
 the Emperor Meiji in 1869.



Prince Alfred, Duke of Edinburgh,
 Letter to Queen Victoria,
 Edo, 3 September 1869



Eisuke (Jomi) Shōbi, Kyoto,
 Tea pot and pair of cups,
 1880–81.
 Presented to
 King Edward VII when
 Prince of Wales by
 Prince Albert Victor and
 Prince George in 1881.



Iida & Co., Kyoto, Japan,
Embroidered folding screen,
c. 1880–1900.

Presented to
King Edward VII on the
occasion of his coronation
in 1902 by Prince Komatsu
Akihito, on behalf of the
Meiji Emperor.



Akatsuka Jitoku,
Box and cover, c. 1900–07.

Presented to Queen Mary when Princess of Wales
by Prince Fushii Sadanaru in 1911.



Shirayama Shōsai,
Cosmetic Box and Cover, c. 1890–1905.
Sent to Queen Elizabeth II by the Emperor Shōwa
on the occasion of her coronation, 2 June 1953.

A selection of images is available to download from www.picselect.com.