

9

Whose Dolls' House can you see at the Castle?

- Queen Anne
- Queen Elizabeth
- Queen Mary

10

Inside the State Apartments see which of these you can find



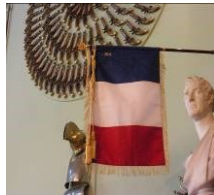
a gold tiger's head



Henry VIII's suit of armour



A royal bed



A flag looking like this

11

As you leave the Apartments see if you can find this statue of King Charles II.

(Clue: Look over towards the railings)

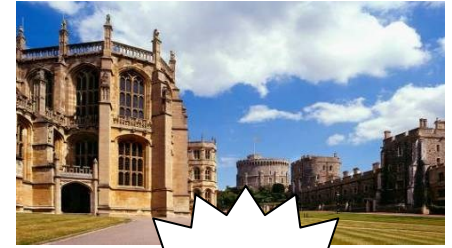


Well done. You did a great job. Was your visit lots of fun? When you get home why not draw a picture of your favourite thing here at Windsor Castle? And don't forget to come back soon.



# WINDSOR CASTLE

## I SPY AT WINDSOR CASTLE



Ages  
4-7

Name.....  
Ask a warden if you need help with any questions!

1

Which flag is flying from the Round Tower ? You can tell if The Queen is here today, is it

- The Union Flag
- or
- The Royal Standard



The Queen is not here

The Queen is here

2

How old is the Castle?

- 200 years
- 300 years
- 900 years



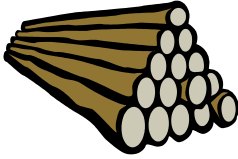
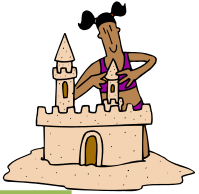
3

Is the Castle built of

sand

wood

stone



4

How many soldiers can you find on guard duty?

1  2  3  4  5  6  or lots more!



5

Looking around the Castle can you find:



very narrow windows



a wooden door



a policeman



a cannon

6

Which is the strongest part of the Castle?

St George's Gate

The Round Tower



7

In St George's Chapel whose Flags / Banners are hanging in the Quire?



Soldiers

Knights of the Garter

8

What animal did brave St George kill?

